

DOUBLE DECKER PEST REPELLER

Ultrasonic wave & Elec-Magnetic wave

Congratulations and thank you for purchasing this pest repeller, a technically advanced environmental product, which will help you effectively repel mice, cockroaches, ants, fleas, spiders and a majority of rodents. It is the best way to repel pests and take care of environmental sanitation at the same time. Can be used in houses, restaurants, warehouses, supermarkets, bakeries, grocery stores, department stores, factories, and older buildings. By carefully following the below instruction, you will be able to enjoy trouble-free operation for your life.

Principle and Characteristic

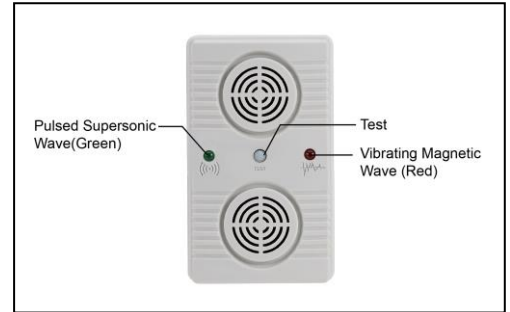
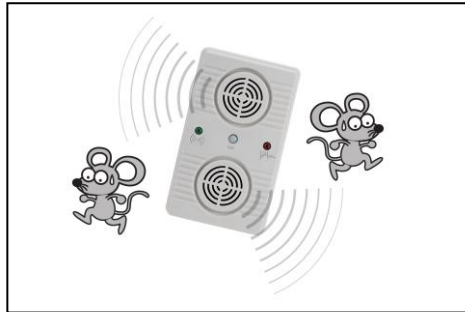
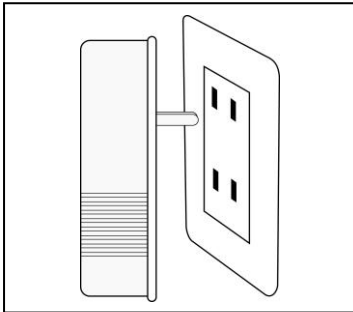
• Vibrating Magnetic Wave:

Uses an intermittent varied physical signal to emit a magnetic-vibrating wave, passes by connected power or ground lines to make pests that are hiding in the walls, uncomfortable and non-viable in order to repel them effectively.

• Pulsed Supersonic Wave:

Uses a high pitch sound unheard by humans but is frightening to mice (e.g. it is comparable to humans hearing a glass-scratching sharp sound). The sound attacks the pests continuously in order to repel them effectively.

The unit uses the vibrating magnetic wave and the pulsed supersonic wave to effectively attack mice and pests giving them nowhere to hide.



Usage

1. Plug the unit into an electrical wall outlet. If the outlet has a switch please ensure the switch is turned on at all time.
2. A green light will flash for indicating ultrasonic wave constantly, and the red light will flash for indicating Electro-Magnetic wave when functioned.

Effectiveness

It is effective up to 300 square meters. For maximum effects install the pest repeller in each separate room. A couple of weeks after installation, you may find there are more mice and pests than normal. This is normal, after a period of time, they will disappear.

Economical Safe

- Durable
- Low Energy Cost
- Non-Chemical
- Safe for Human, Pet, Household Electric Product & Computer
- With EPA #074132-TWN-001

Once effective, no more trouble & no more intrusion.

When the mice & pests are repelled and decreased, we suggest you take the occasion to annihilate them entirely.

Attention

- Do not place the Dual-Wave Repeller behind big pieces of furniture or behind draperies.
- Do not place outdoors or where it can become wet.

Specification

Frequency Range: 18KHz-32KHz

Output Sound Pressure: 95dB x 2 (two speakers)

Size: Abt. 113x67.3x34mm

Weight: Abt. 100g

Power 110V-120V/60Hz or 220V-240V/50Hz